

TA-DC-WD

Manual Operation

TA-DC-WD 7kW

TA-DC-WD 15kW

TA-DC-WD 20kW

TA-DC-WD 30kW

TA-DC-WD 40kW



*Thank you for use
Nippon Charger!*

CCS1 CCS2



CONTENTS

NO.1 Product technical parameter ----- **P1-2**
Detailed technical parameter

NO.2 Installation ----- **P3-5**
Pre operation inspection
wire connect
Wallbox/Stand

NO.3 Charging operation ----- **P6-15**
Stand alone-Swipe card
Portable-start/ stop button
APP
Rate

NO.4 Fault check and Solution— — — — — **P16-21**
System check
Record query
Equipment query
Hardware check



01

Product technical parameter

1.1 Detailed technical parameter

| model | 7 kW | 15 kW | 20 kW | 30 kW | 40 kW |
|--------------------|---|------------------|-------|----------------|-------|
| TA-DC-WD | | | | | |
| Input Current | 32A | 30A | 40A | 50A | 64A |
| Input voltage | 90-265V | 265-475V 3 phase | | | |
| output voltage | 200-750V | 200-1000V | | | |
| output Current | 20A | 37A | 67A | 100A | 133A |
| Display | 7-inch color LCD display | | | | |
| cable length | 5M(Customization) | | | | |
| Frequency | 50Hz±10% | | | | |
| IP LEVEL | IP54 | | | | |
| plug standard | CCS1 | | CCS2 | | |
| Auxiliary source | 12V (24V optional) | | | | |
| Charging protocol | DIN 701210CPP 1.6(JSON)ISO 15118 GBT27930/CHADEMO 2.0/ | | | | |
| start/ stop button | 0 | 0 | 0 | 0 | 0 |
| Swipe card | 0 | 0 | 0 | 0 | 0 |
| APP | bluetooth | | | | |
| Ocpp-4G | x (optional) | | | | |
| product size | 47.5*22*66.5cm | | | 66.5*30*47.5cm | |
| Work efficiency | 95% | | | | |
| Temperature | -25~+50 (Derating higher than 50) | | | | |



02

Installation

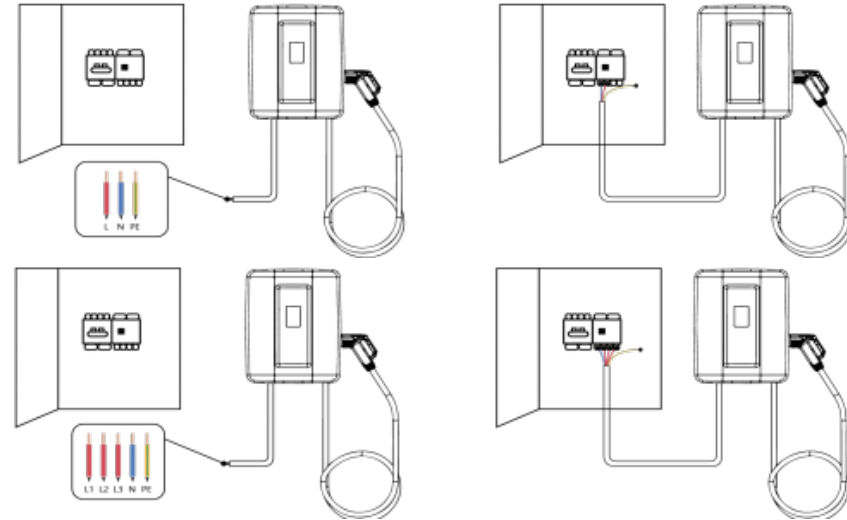
- 2.1 Pre operation inspection
- 2.2 Wire connection
- 2.3 wallbox/with stand

2.1 Pre operation inspection

1. Connect the charging station and accessories correctly, install them firmly. During charging, prohibited to pull out the plug. Non-professionals should not open the charger shell to prevent damage the charger;
2. Ensure the input PE line is reliably grounded. Reliable power supply capacity and cable must meet the requirements and not less than the rated power calibrated. Reasonable selection and installation the AC incoming leakage protection circuit breakers;
3. Finish charging, swipe card, pull out the gun, turn off the charger and the 220 / 380V ac air switch;
4. Do not pull the gun out of the socket by force, avoid metal and other foreign conductors from entering the equipment;
- 5 Pay attention to the power supply voltage of BMS of 12V or 24V, select the correct charger model ,we default with 12V power supply;
6. No use in a rain water environment;
7. The product has below function: 1)Automatic current limiting feature: when the output current exceeds the output current limiting set value, the constant current output will not increase the output current.
2) Output short-circuit protection: When the output is short-circuited, the module will protect itself to prevent damage, and it can automatically resume work after troubleshooting;
3) Output overvoltage protection: Automatically stop output when the output voltage exceeds the rated output voltage $5\% \pm 5\text{-VDC}$ to prevent damage to the equipment.
8. During harging, if there is a fault, please take the picture of the display screen and error code to the manufacturer.

2.2 Wire connection

According to Technical Specification, if 7kW, the input connection is L+N+PE; if 15kW/20kW/30kW/40kW, it is 3P+N+PE. Connect Power Supply : Please be noted Blue is Zero wire, green yellow is earth wire , black,brown and grey are fire wire.



2.3 wallbox / Stand



03

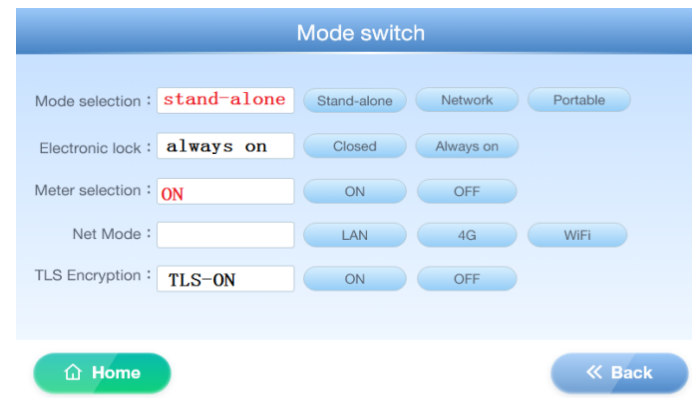
Charging operation

- 3.1 Stand alone-Swipe card
- 3.2 Portable-start/ stop button
- 3.3 APP
- 3.4 Rate

3.1. Swipe card to start charging

3.1.1 Swipe card

Note: Factory set is swiping card.



Step 1: Open air switch in charger. Confirm the equipment is normal.

Step 2: Confirm the vehicle meets the charging conditions. Stop the car, turn off the engine. Insert plug into the vehicle port.

Step 3: Click on the main interface Gun A to display the card swiping interface. Please swipe card in the RFID icon. After successful charging, the display interface jumps to the charging interface, which can display real-time charging process information.

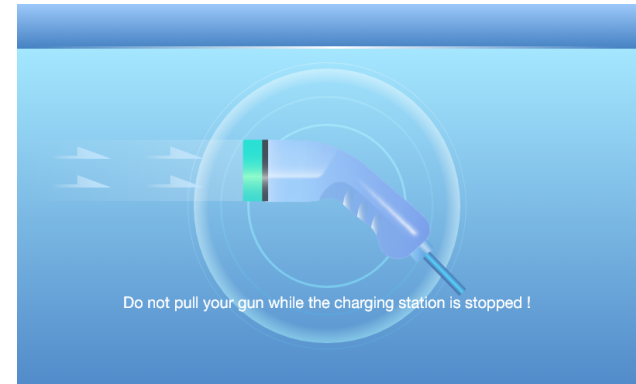
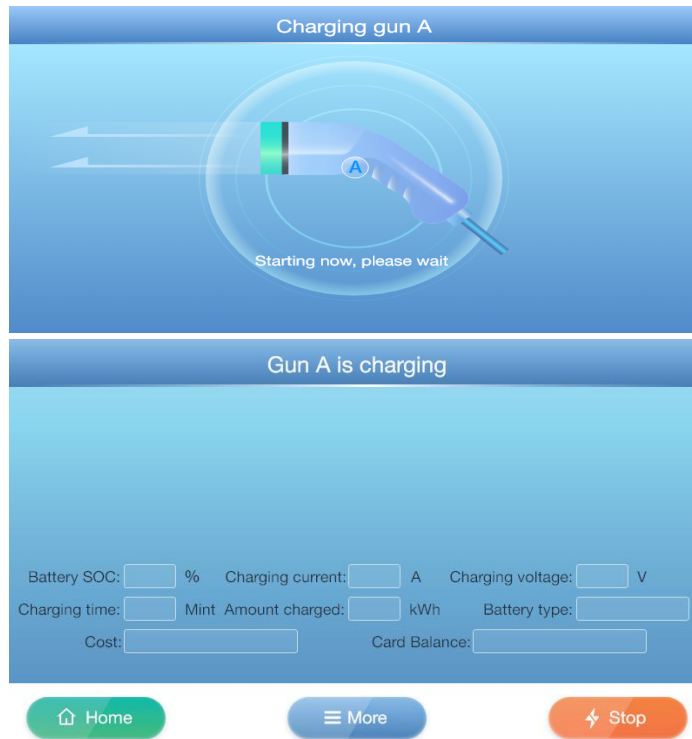
Start delay: 5S-8S.





Step 4: if stop, please use same card to stop!

If you want to stop charging, tap on the screen to select the charging gun icon then stop charging by swiping RFID card, after automatically detected for a few seconds, it stops charging.



Notice:

In case of emergency, please press the red emergency stop button on the side.



Step 01
Plug in the Charging gun



Step 02
Open the Air Switch



Step 03
Start Charging from authorized RFID Card



3.1.2 Card management-Bind card

Bind card, one card for exclusive use:

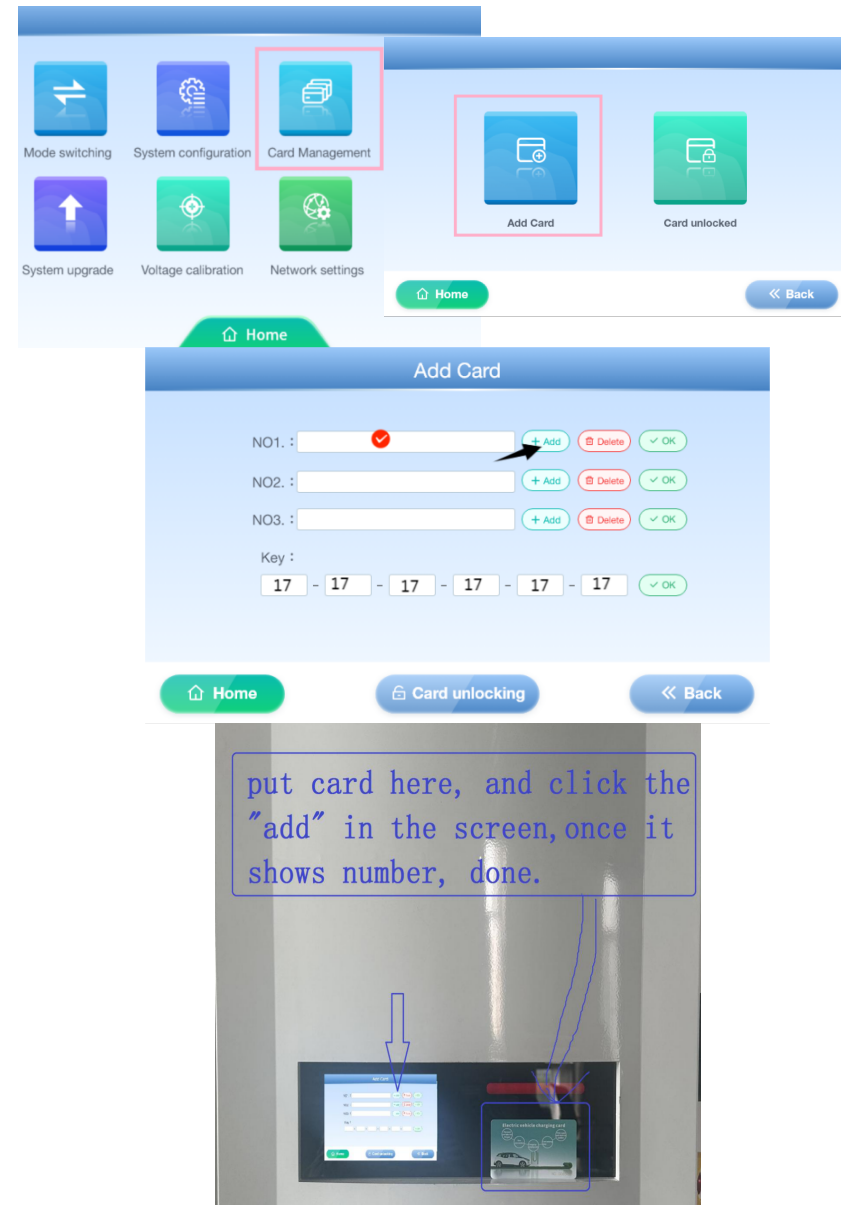
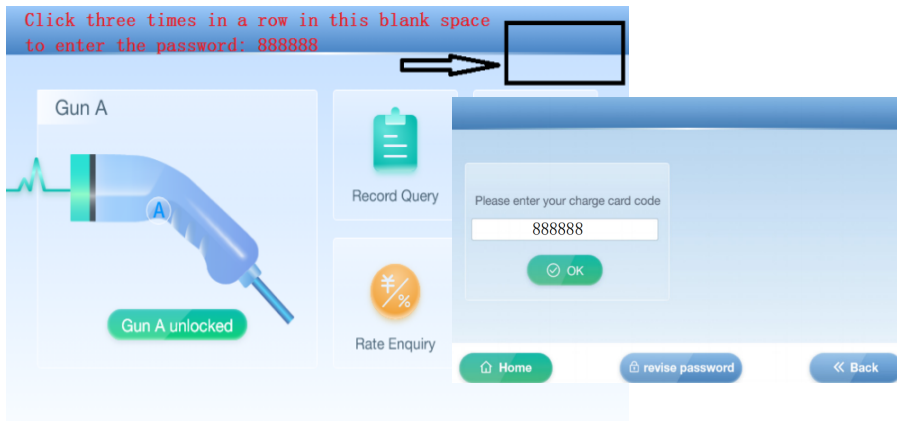
Click on the [Card Management]. The main functions include Add card and Card unlocked.

1) Add card

Click the [Add card]

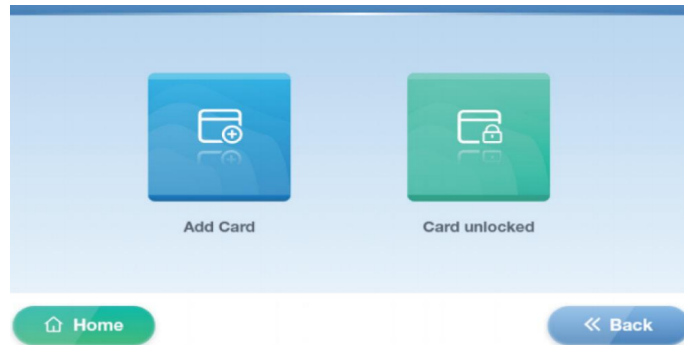
NO1: Place the charging card at the card swiping location, click the +Add button on the right, and the card number will be displayed on the left. Click the OK button, and the card binded (three charging cards can be bound). The card binding here only takes effect in Stand alone mode. If the card has been bound, only the bound card can be swiped for charging, you can delete the card also in this page.

Key: The default value is 17 (all 6 input boxes are 17), which is the same as the Key provided for the charging card. If you need to modify the Key (the charging card needs to be modified to the same Key, use professional card maker tools to change the Key), click the OK button after modification, and restart the charging station. When there is no bound card, charging cards with the same Key can be swiped and charged normally in Stand alone mode.



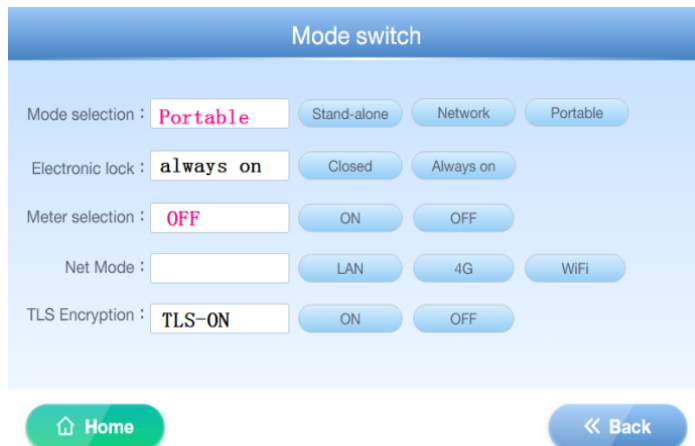
2) Card unlocked

if card is locked, put the card in the RFID icon of charger,click "card unlock"

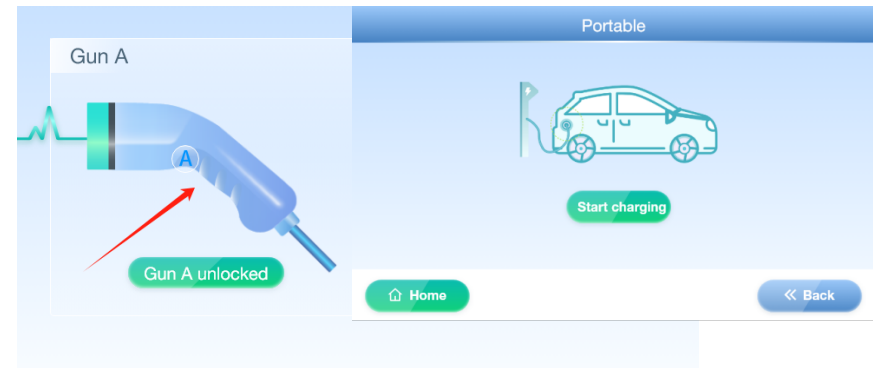


3.2 portable mode=start by click icon in screen

(if you change to this mode, remember to restart after changing)



Click the first page, the left part the gun,next page,click the "Start charging". If you need stop, also in this page,"click Stop".

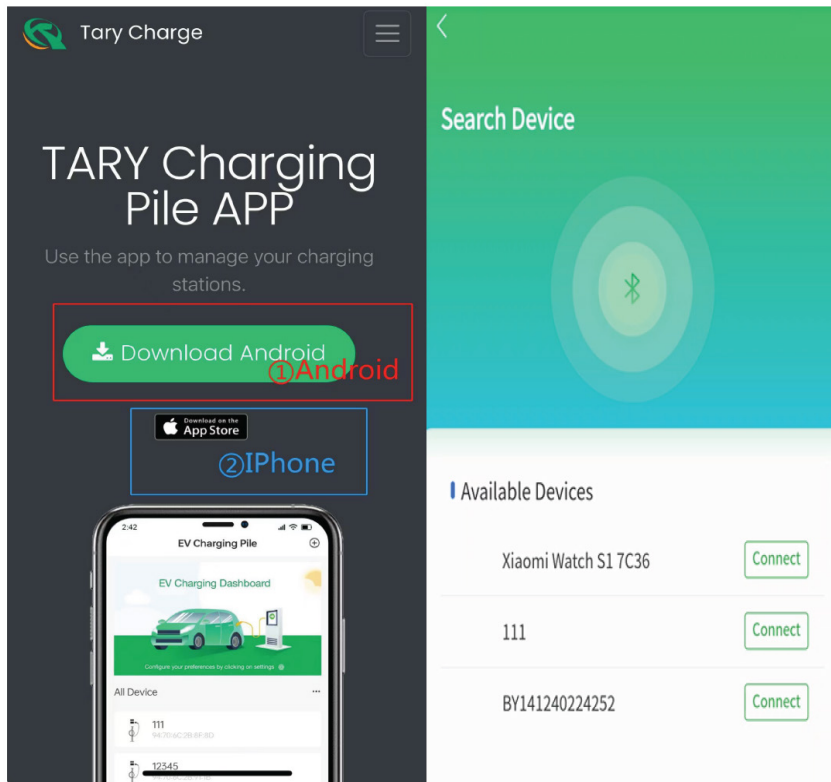


3.3 APP

For App function, this EV charger should be "Portable" mode.

1. Scan the code to download " Tary charge"
2. Then, if Android phone, please download the APP, If iPhone, click "APP store".





device No.: N15A1--N15A1000N20A1--N20A1000
 N30A1--N30A1000
 N40A1--N40A1000 (between)

N15E1--N15E1000
 N20E1--N20E1000
 N30E1--N30E1000
 N40E1--N40E1000 (between)
 you can change it also by changing pile No.

3.4 Rate inquiry

1) Rate inquiry, click to enter the Rate details interface, where you can view the unit price and service fee during the charging period (which can be set in the Rate setting function menu in the system settings).

| Time | Unit Price | Service Fee |
|------|------------|-------------|
| : | — | : |
| : | — | : |
| : | — | : |
| : | — | : |

2) Clic the Monetary unit input box to enter the Monetary unit interface and select the desired currency unit.

04

Fault Check and Solution

4.1 System check

4.2 Record query

4.3 Equipment query

4.5 Hardware check

- The main reasons for slow charging speed may be insufficient power, limited current of charging stations. Well grounded reliable. Please select a higher power charging station. Check the vehicle settings, adjust charging parameters, etc.
- Clean the gun head and foreign objects in the gun needle hole. After one or two months, restart the equipment.
- If the charging has ended or ended abnormally, please use the same card to stop.
- Charging stop if entering the system configuration interface.
- Emergency stop button, avoid touching in non emergency situations.

4.1 System check

Every time, please check the setting about the: Mode switching and System configuration.

For System configuration (take photos of every page so we will check them) Check which power of your charger, corresponding parameters in system settings



1) 15kW-System configuration
next modules page, choose "INFY 20kW", every time if you change setting, please power off and power on again.

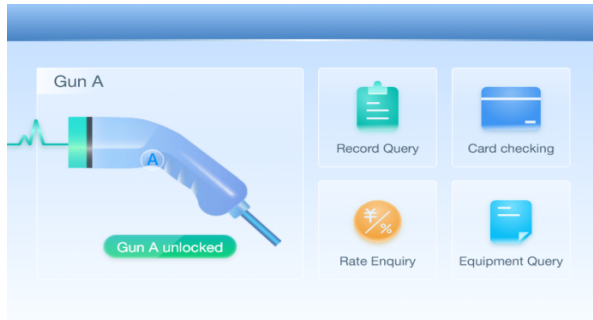
2) 20kW-System configuration
next modules page, choose "INFY 20kW"

3) 30kW-System configuration
next modules page, choose "INFY 30kW"

4) 40kW-System configuration
next modules page, choose "INFY 20kW"

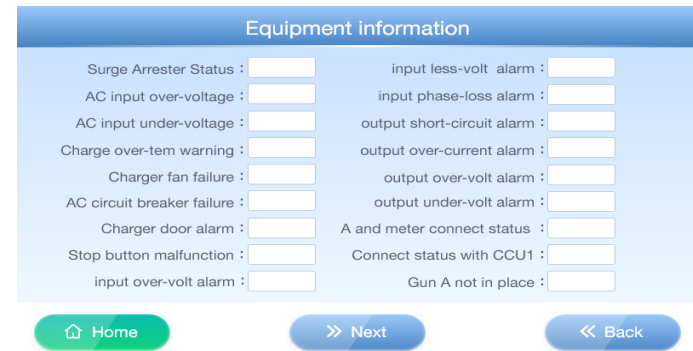
4.2 Record query

Click [Record Query] : view charging records information. Next buttons to view more records. Give Error code and this page to agent.



4.3 Equipment query

Click on 【 Equipment Query 】 to check the operating status of the charging station, and facilitate the quick and easy search for operational faults of the charging station.



4.4 Hardware Check

4.4.1 Emergency Button



4.4.2 Terminal

- 1) Power off, multimeter-gear test: SB:NC1 and SB:C1. If normal:Short cut when button is out, Open when button is in.
- 2) Check whether the terminal and PLC is loose. CANL and CANH

